

BLACKMER PARTS LIST

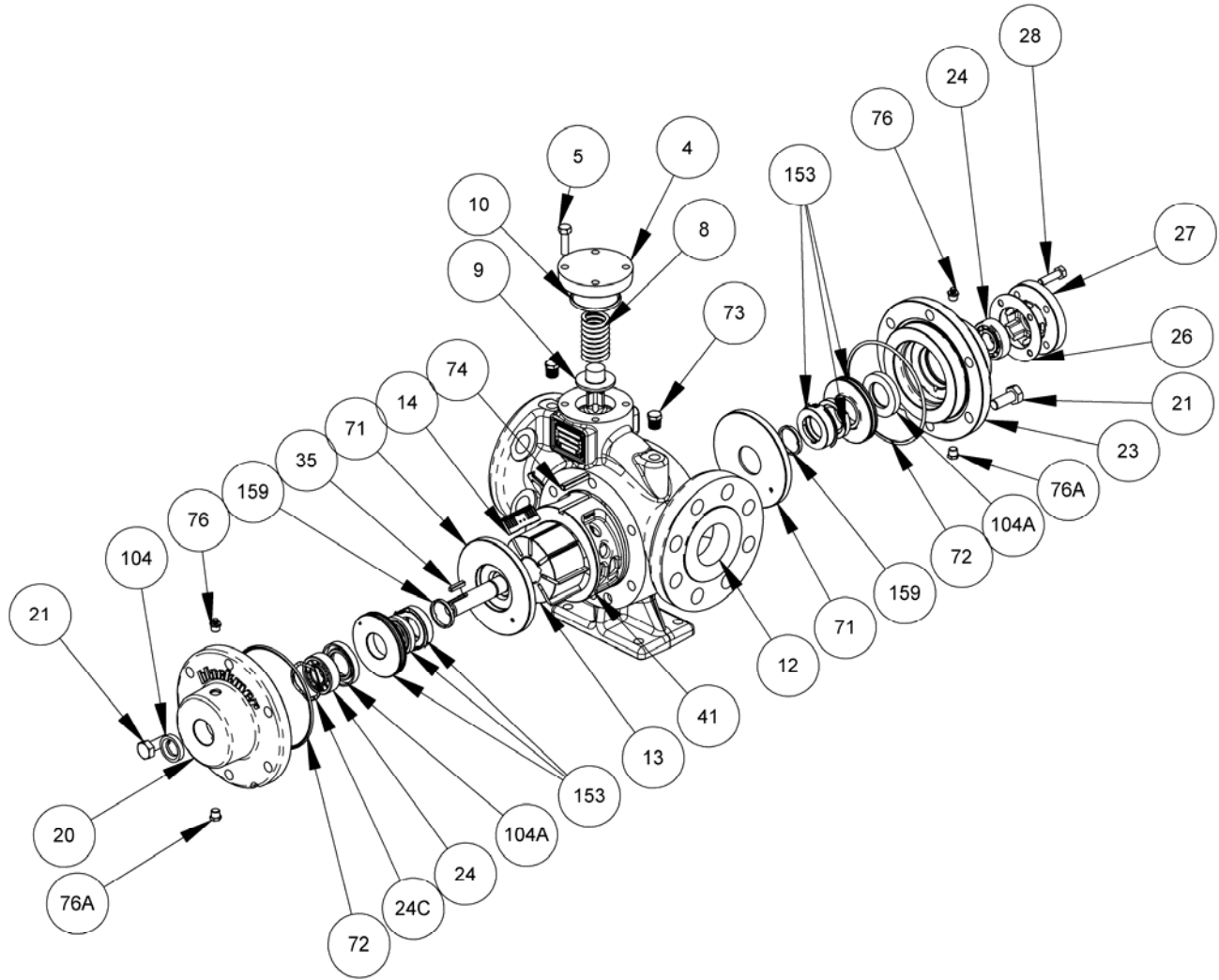
PUMP MODELS: LGL154A, LGL156A, LGL158B and Discontinued LGL158A

Keep with Installation, Operation and Maintenance Instructions 501-K00

960438
Page 1 of 2

PARTS LIST
501-K01

Section 501
Effective Mar 2011
Replaces Feb 2011



Ref. No.	Description	Parts Per Pump	Part No.	Ref. No.	Description	Parts Per Pump	Part No.
4	Cover - Relief Valve (R/V)	1	415701	35	Key - Shaft (for shaft 265702)	1	¹ 909153
5	Cap screws - R/V Cover	4	920122		Key - Shaft (for older shaft 265701)		¹ 909152
8	Spring - R/V (225 psi)	1	471400	41	Liner (LGL158)	1	185701
9	Valve - R/V	1	455701		Liner (LGL156)		185710
10	O-Ring - R/V Cover	1	¹ 711924		Liner (LGL154)		185711
12	Casing	1	015701	71	Disc	2	¹ 065701
13	Rotor & Shaft Assy.	1	265702	72	O-Ring - Head	2	¹ 702169
	Rotor & Shaft Assy. (LGL158A only) ²		² 265701	73	Gage Plug	2	908198
14	Vane - Duravane	8	¹ 094860	74	Key - Liner	1	909177
20	Head Inboard	1	035701	76	Grease Fitting	2	317815
21	Cap screws - Head	12	920468	76A	Grease Relief Fitting	2	701992
23	Head Outboard	1	035703	104	Grease Seal - Outer	1	¹ 331921
24	Ball Bearing	2	¹ 903148	104A	Grease Seal - Inner	2	¹ 335702
24C	Bearing Spring	1	¹ 903187	159	Seal Spacer Ring	2	375701
26	Shim Kit (6 ea: .002", .005" & .010")	Varies	¹ 905172	—	Kit - Maintenance	—	899222
27	Bearing Cover	1	045701	—	Priming Valve (for Underground Tank Installations)	—	455750
28	Cap screws - Bearing Cover	4	920122				

¹ Included in Maintenance Kit.

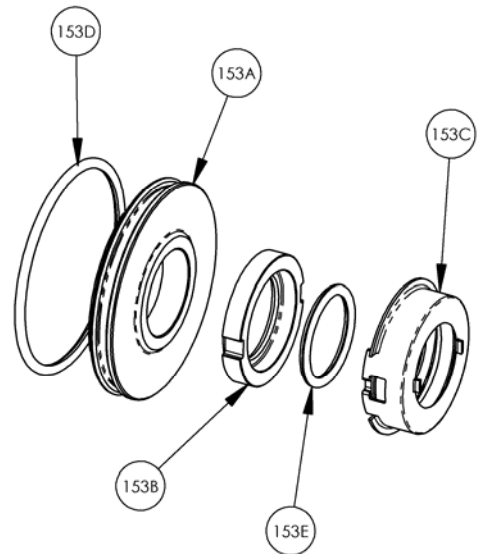
² The 265702 will fit the LGL158A, but will require baseplate modifications as it is 1.41" longer than the 265701 shaft.

MECHANICAL SEAL – LPG

Ref. No.	Part Name	Parts Per Pump	Part No.
153	Mechanical Seal Assembly - SNCN	2	¹ 335703
153A	Stationary Seat (Steel)	2	**
153B	Seal Face (Carbon)	2	**
153C	Jacket Assembly	2	**
153D	O-Ring - Stationary (Buna-N)	2	701934
153E	O-Ring Rotating (Buna-N)	2	711917

¹ Included in Maintenance Kit and Rebuild Kit

** NOTE: Mechanical Seal Ref. No. 153 is only sold as a complete assembly. Ref. Nos. 153A, 153B & 153C are not available as separate replacement parts.



C-FACE MOTOR ADAPTOR BRACKET

Ref. No.	Description	Parts per Pump	Part No.
28A	Bracket Mounting Screws	4	920102
28B	Lockwasher	4	909602
28C	Guard Screw	1	920026
34	Coupling Half – Pump	1	906033
	Coupling Spider		906034
	Coupling Half – Motor 182TC,184TC,215C 213TC,215TC		906164 906032
108	Mounting Bracket	1	833003
108B	Capscrew – Bracket to Motor	4	098116
108C	Lockwasher	4	909706
186	Guard	1	804120

