

# APPLICATIONS

April 1998 volume 12

SIC CODE 49

## OIL / WATER SEPARATOR FEED

Modern power plants often utilize huge turbine generators to produce electricity. Often these generators are washed down for cleaning. The residue, from this process can be a water and oil mixture.

To properly dispose of this material it must be fed to a separator where the oil is separated from the water.

To accomplish this "feed" the Blackmer MLX4 pumps have been successfully applied. The "wash down" is collected in basins or sumps. To draw from the basins and feed the separators requires as much as 4 feet of lift. The MLX4 was applied because of its capability to handle this condition.

Emulsification, the mixing of the water and oil, prohibits the separators from operating efficiently. Therefore, the emulsifying must be reduced as much as possible. The Blackmer vane technology proves to be the answer.

Centrifugal and gear pumps greatly emulsify the product reducing the effectiveness of the separators. Running at 68 RPM and driven by a 5 H.P. motor, the MLX4 is providing the required 60 GPM at 5-10 PSI discharge pressure to feed the separators.

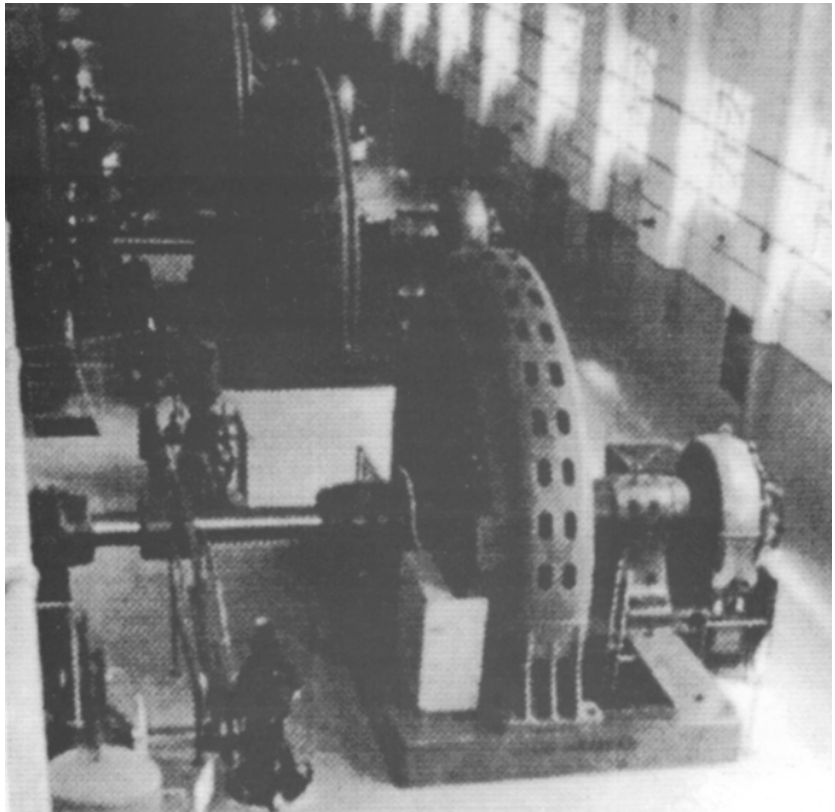
Competitively priced with other pumping options, the superior lift capability, the high efficiency and the

ability to reduce emulsification resulted in the Blackmer MLX4 being installed.

These pumps have been running for 3 years without problems.

### Competition

- Gear pumps
- Centrifugal pumps

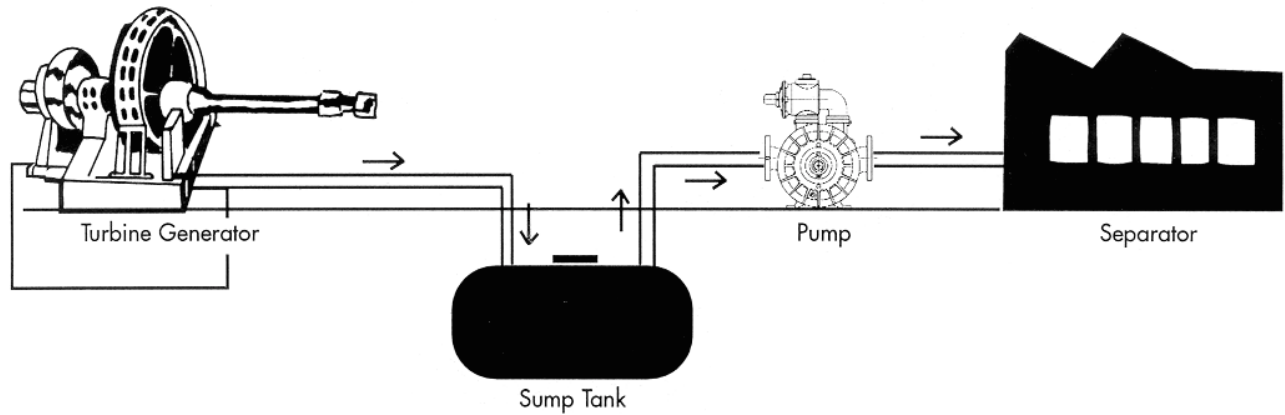


# CHECKLIST

1. Lift conditions
2. Confirm all specifications
3. Available site utilities
4. Frequency of operation

---

## OIL / WATER SEPARATOR FEED



---

## SIC CODES



1809 Century Avenue, Grand Rapids, Michigan 49503-1530, U.S.A.  
Telephone: (616) 241-1611 • Fax: (616) 241-3752  
E-Mail: [blackmer@blackmer.com](mailto:blackmer@blackmer.com) • Internet: [www.blackmer.com](http://www.blackmer.com)